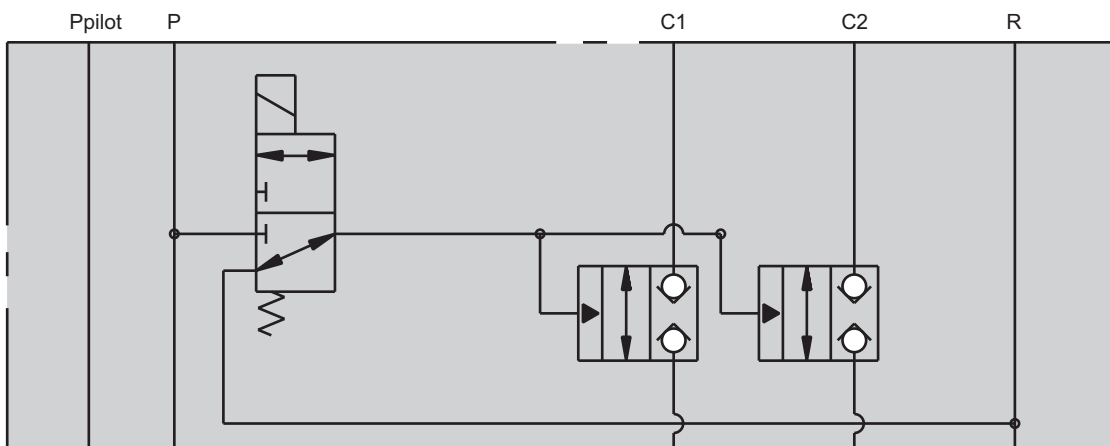


SM055-A Solenoid Operated Isolation Module



- Solenoid or pressure activated
- Prevents flow to and from control ports
- Fits valve models 550, 552, 650, 652
- Port pattern to ISO 10372-04-04-0-92
- 4 & 5 port (Ppilot) supply

Star Hydraulics Ltd.
8A Beta Close
Tewkesbury Business Centre
Tewkesbury
Gloucestershire GL20 8SR
England U.K.

Tel.: +44 1684 296176
Fax.: +44 1684 850714

Email: sales@star-hydraulics.co.uk
Web: <http://www.star-hydraulics.co.uk>

Description

This module contains 2 pilot-to-open logic valves and a 3-way normally closed solenoid valve. When the solenoid is de-energised the logic valves isolate the servovalve control ports and thus lock the actuator in position.

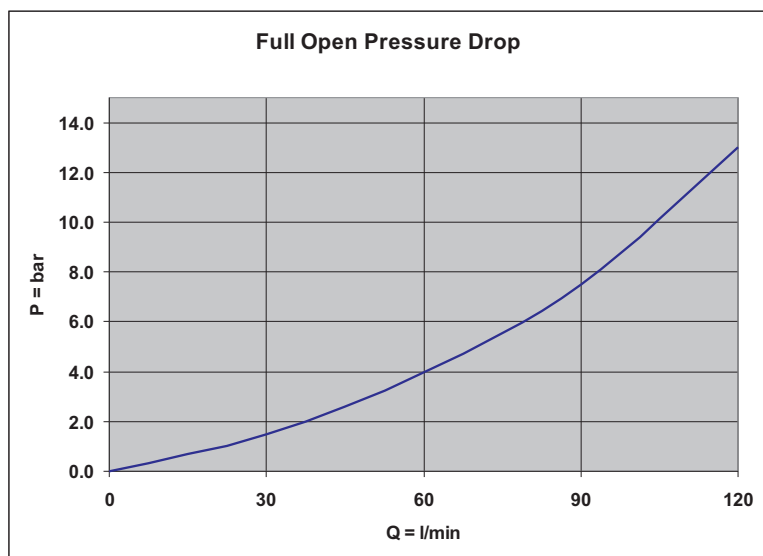
Typical applications:-

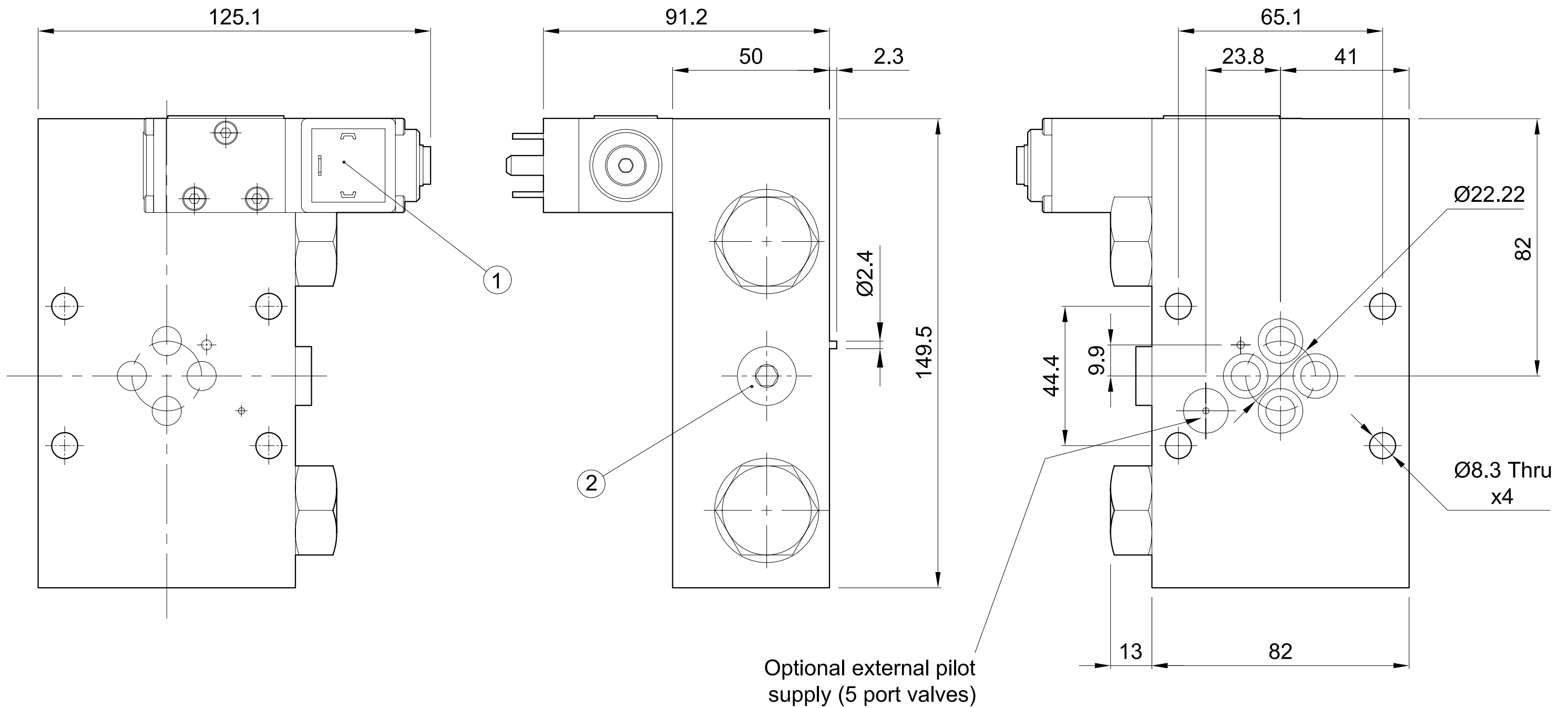
As a safety device this unit will lock the actuator upon loss of supply pressure.

In applications such as process control where movement is infrequent this module will enable significant energy savings. When movement is no longer required the supply pressure may be turned off and the module will prevent actuator movement.

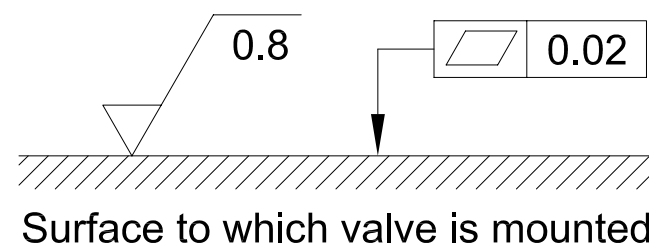
In applications that employ system monitoring and require actuator lock upon system malfunction.

Maximum pressure	350 bar
Seal material	NBR 90
Leakage rate	< 5 drops/min
Response	0.2 sec
Weight	4 kg
Fluid type	Petroleum based mineral oils For operation with other media contact factory
Solenoid rating	24 VDC (std) 12 VDC 110 VAC* 115 VAC* 230 VAC* *rectifier integrated in the plug
Voltage tolerance	±10% of nominal voltage
Electrical connector	DIN 43650 (2P+E), other connections on request.





- 1. Solenoid poppet valve
- 2. External pressure feed



Installation Details SM055-A-...

Dimensions in millimeters
3rd angle projection

Filename